

➤ **Vendor: Cisco**

➤ **Exam Code: 300-630**

➤ **Exam Name: Implementing Cisco Application Centric Infrastructure - Advanced**

➤ **New Updated Questions from [Braindump2go](#) (Updated in [April/2024](#))**

[Visit Braindump2go and Download Full Version 300-630 Exam Dumps](#)

QUESTION 81

Leaf 1002 receives a packet from a host attached to Leaf1001. The packet contains the MAC address, IP address, and VRF of the source. Which information does each node learn?

- A. Leaf1002 learns the IP address of the source.
Spine2001 learns the VRF of the source.
- B. Leaf1002 learns the VRF of the source.
Leaf1002 learns the IP address of the source.
- C. Leaf1001 learns the MAC address of the source.
Leaf1002 learns the IP address of the source.
- D. Leaf1001 learns the IP address of the source.
Spine2001 learns the IP address of the source.

Answer: B

QUESTION 82

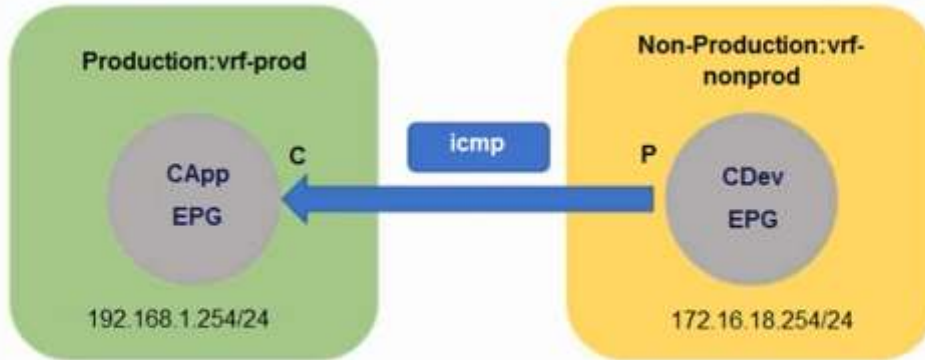
What is the outer destination IP address in the VXLAN encapsulated packet for Layer 2 Broadcast, Unknown-unicast and Multicast (BUM) that is sent between two Cisco ACI sites?

- A. Overlay Unicast TEP
- B. MP-BGP EVPN Router-ID
- C. Multi-Pod Data-Plane TEP
- D. Overlay Multicast TEP

Answer: D

QUESTION 83

Refer to the exhibit. An administrator configures inter-VRF route leaking between Production:vrf-prod and Non-Production:vrf-nonprod. However, the route in the Non-Production:vrf-nonprod VRF to the production tenant is missing. Which action resolves the VRF route leaking issue?



```
leaf-01# show ip route vrf Production:vrf-prod
IP Route Table for VRF "Production:vrf-prod"
** denotes best ucast next-hop
*** denotes best mcast next-hop
'[x/y]' denotes [preference/metric]
'%<string>' in via output denotes VRF <string>

172.16.18.0/24, ubest/mbest: 1/0, attached, direct, pervasive
    *via 10.0.64.66%overlay-1, [1/0], 00:02:10, static, tag 429496294
192.168.1.0/24, ubest/mbest: 1/0, attached, direct, pervasive
    *via 10.0.64.66%overlay-1, [1/0], 1d00h, static
192.168.1.254/32, ubest/mbest: 1/0, attached, pervasive
    *via 192.168.1.254, vlan14, [0/0], 1d00h, local, local

leaf-01# show ip route vrf Non-Production:vrf-nonprod
IP Route Table for VRF "Non-Production:vrf-nonprod"
** denotes best ucast next-hop
*** denotes best mcast next-hop
'[x/y]' denotes [preference/metric]
'%<string>' in via output denotes VRF <string>

172.16.18.0/24, ubest/mbest: 1/0, attached, direct, pervasive
    *via 10.0.64.66%overlay-1, [1/0], 00:02:15, static, tag 4294967294
172.16.18.254/32, ubest/mbest: 1/0, attached, pervasive
    *via 172.16.18.254, vlan16, [0/0], 00:21:33, local, local
```

- A. Enable the Shared between VRFs option for the BD subnet in the production VRF.
- B. Change the contract scope to Global.
- C. Enable the Shared between VRFs option for the EPG subnet in the non-production VRF.
- D. Export the contract from provider to consumer tenant.

Answer: A

QUESTION 84

Which device replicates Broadcast, Unicast, and Multicast (BUM) frames to all remote sites in a Cisco ACI Multi-Site with multiple stretched bridge domains?

[300-630 Exam Dumps](#) [300-630 Exam Questions](#) [300-630 PDF Dumps](#) [300-630 VCE Dumps](#)

<https://www.braindump2go.com/300-630.html>

- A. remote spine node that translates the VNID to the locally significant value
- B. receiving leaf that learns the location for the sourced BUM traffic
- C. source leaf that floods the traffic to the specific multicast group or GIPO
- D. local spine that is elected the designated forwarder for each bridge domain

Answer: D

QUESTION 85

A packet is routed between two endpoints on different Cisco ACI leaf switches. Which VXLAN VNID is applied to the packet?

- A. VRF
- B. EPG
- C. BD
- D. FD

Answer: C

QUESTION 86

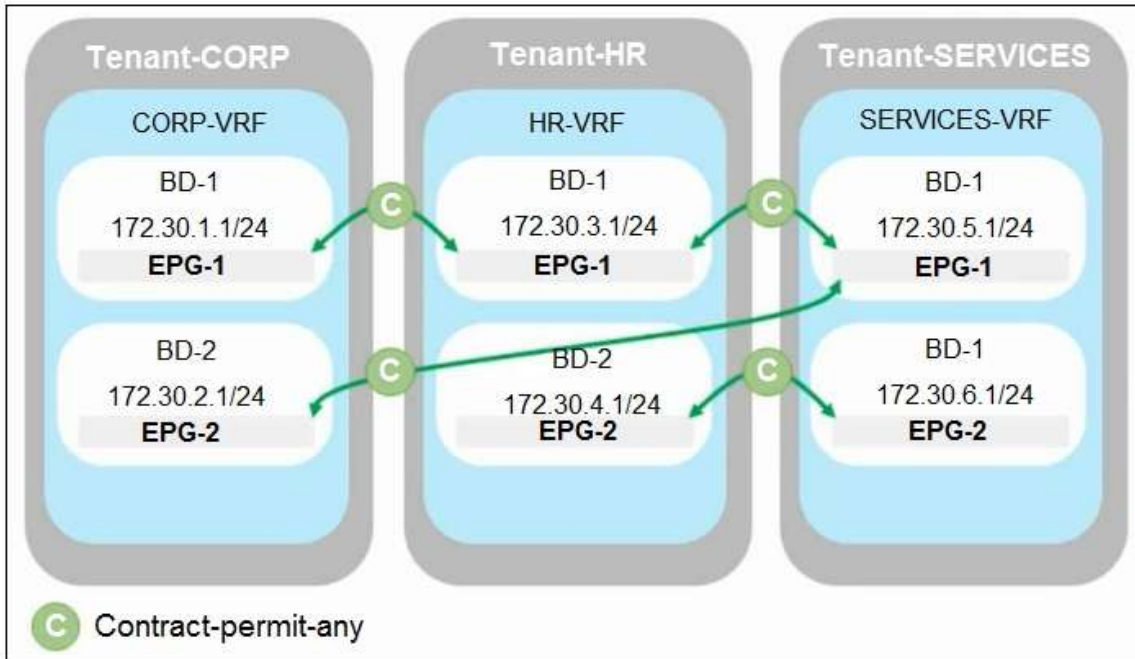
An engineer is deploying a Cisco ACI fabric and discovers that the traffic to certain endpoints is dropped. The originating bridge domain is configured with hardware proxy. Which action prevents this problem?

- A. Set the L2 Unknown Unicast option to Flood for Layer 2 switched traffic.
- B. Set the L2 Unknown Unicast option to Hardware-Proxy for Layer 2 switched traffic.
- C. Enable the ARP Flooding option under the bridge domain for Layer 3 routed traffic.
- D. Disable the ARP Flooding option under the bridge domain for Layer 3 routed traffic.

Answer: B

QUESTION 87

Refer to the exhibit. A company merges three of its departments: CORP, HR, and SERVICES. Currently, the connectivity between departments is achieved by using VRF route leaking. The requirement is to redesign the Cisco ACI networking architecture to communicate between EPGs and BDs from any tenant without configuring contracts or VRF route leaking. Which configuration meets these criteria?



- A. Implement an enforced VRF in the common tenant and map all required BDs to it
- B. Configure an enforced VRF in the user tenant and map all required EPGs to it.
- C. Implement an unenforced VRF in the common tenant and map all required BDs to it.
- D. Configure an unenforced VRF in the user tenant and map all required EPGs to it.

Answer: C

QUESTION 88

An engineer troubleshoots a Cisco ACI fabric and receives this output:

```
leaf-a# show interface tunnel 6
```

```
Tunnel6 is up
```

```
MTU 9000 bytes, BW 0 Kbit
Transport protocol is in VRF "overlay-1"
Tunnel protocol/transport is ivxlan
Tunnel source 10.0.144.64/32 (lo0)
Tunnel destination 10.0.144.66
<... output omitted ...>
```

```
spine# show coop internal info repo ep | egrep 'EP mac|Real IPv4 EP|^Tunnel nh|--'
```

```
EP mac: 3B:E4:46:98:47:89
```

```
Tunnel nh : 10.0.144.64
```

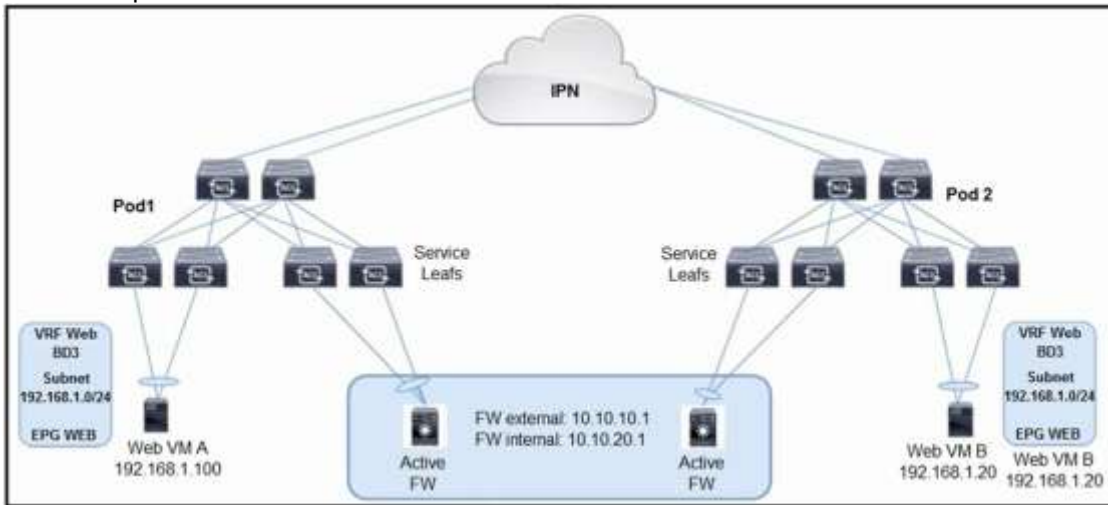
What does tunnel 6 use?

- A. default VRF
- B. GRE protocol
- C. jumbo frames
- D. public IP address

Answer: B

QUESTION 89

Refer to the exhibit. An engineer is deploying a Cisco ACI Multi-Pod with an independent active/active Layer 3 firewall cluster across the pods. Which task must the engineer perform to prevent the creation of duplicate IP/MAC entries across the pods?



- A. Configure anycast service.
- B. Disable Limit IP Learning to Subnet.
- C. Configure the subnet as shared.
- D. Enable Host Route Advertisement.

Answer: A

QUESTION 90

An engineer is configuring a Cisco ACI fabric and requires a shared L3Out network connectivity to external networks. The connectivity must be shared between different tenants. Which tenant type must be created to meet this requirement?

- A. common tenant
- B. infra tenant
- C. management tenant
- D. user tenant

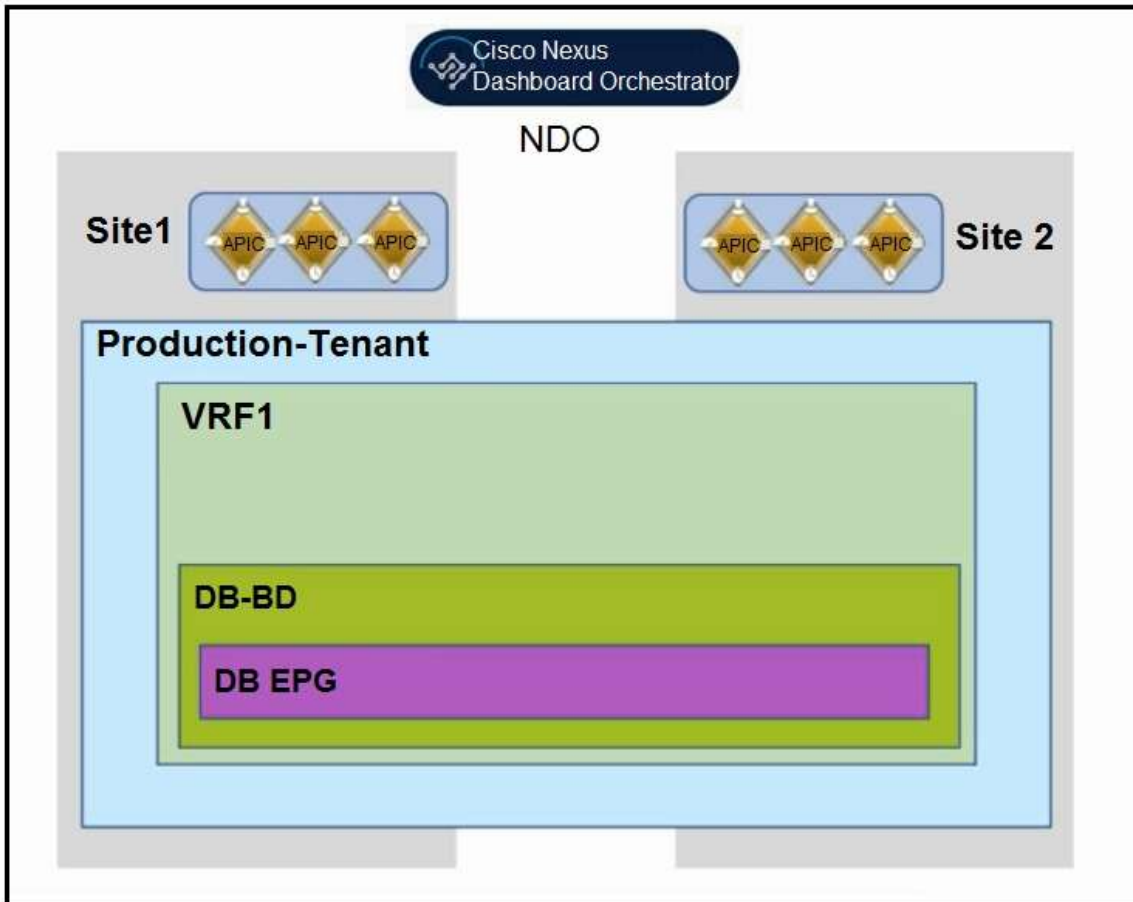
Answer: A

QUESTION 91

Refer to the exhibit. An engineer must allow IP mobility between Site1 and Site2 in a Cisco Nexus Dashboard Orchestrator. The design must meet these requirements:

- A disaster recovery (DR) solution must exist between the sites that do not require vMotion support.
- The application must be started at a DR site without having to re-IP the application servers.
- The solution must avoid any broadcast storms between the sites.

Which two actions meet these criteria? (Choose two.)



- A. Deploy a local EPG for Site and Site2.
- B. Define a unique bridge domain subnet per site.
- C. Configure STP between Cisco ACI fabrics.
- D. Apply the L2 Stretch feature.
- E. Disable Inter-site BUM Traffic.

Answer: DE

QUESTION 92

A customer plans to deploy a Cisco ACI Multi-Pod deployment. Which two features must be implemented on the IPN switches?

- A. Enable BIDIR-PIM.
Configure a minimum multicast range of /15.
- B. Enable BIDIR-PIM.
Configure a maximum multicast range of /23.
- C. Configure PIM anycast RP.
Configure a minimum multicast range of /23.
- D. Configure PIM anycast RP.
Configure a maximum multicast range of /15.

Answer: C

QUESTION 93

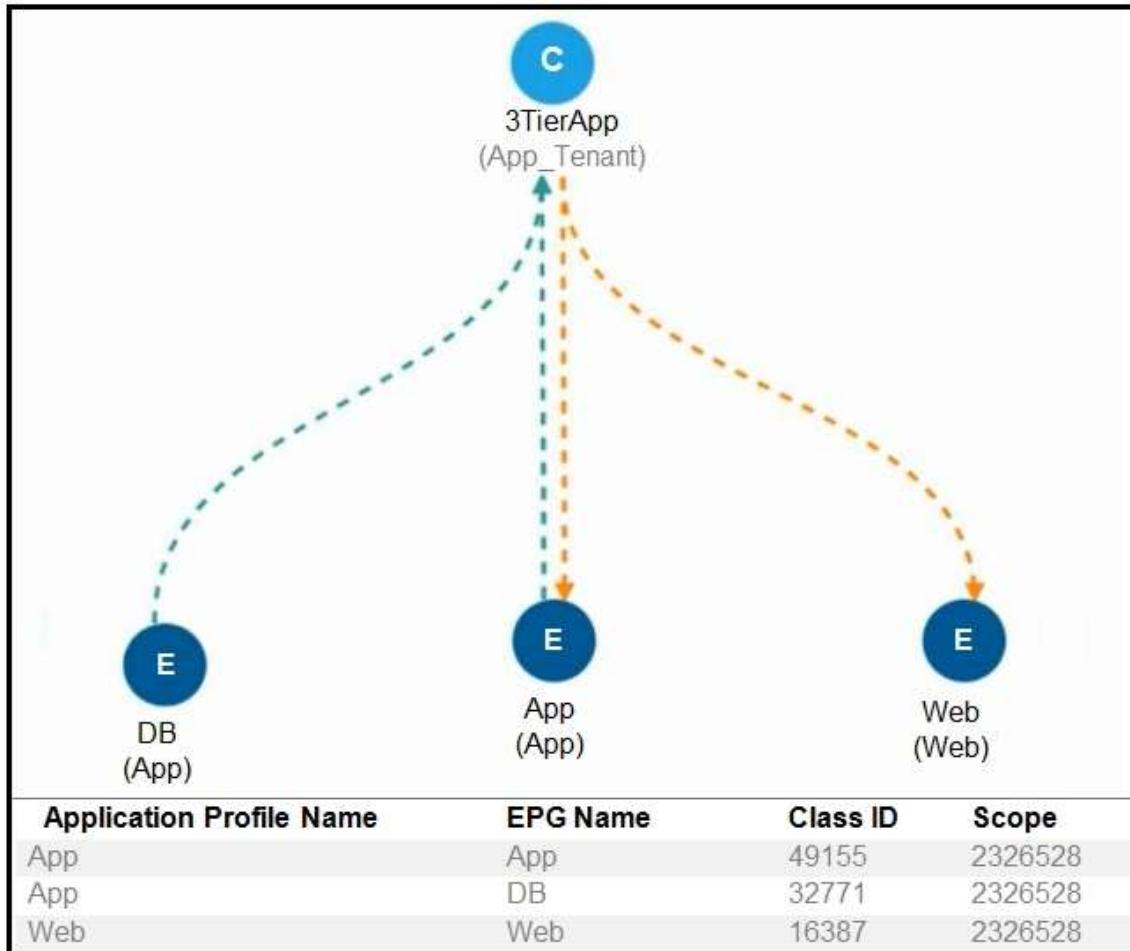
Refer to the exhibit. New e-commerce software is deployed on Cisco ACI fabric. The environment must meet these requirements:

[300-630 Exam Dumps](#) [300-630 Exam Questions](#) [300-630 PDF Dumps](#) [300-630 VCE Dumps](#)

<https://www.braindump2go.com/300-630.html>

- The overall number of contracts must be reduced by reusing the existing contracts within a VRF when possible.
- The e-commerce software must communicate only with software EPGs that are part of the same ANP.
- The e-commerce software must be prevented from communicating with applications in different ANPs.

Which scope must be selected to meet these requirements?



- A. Tenant
- B. Global
- C. Endpoint Group
- D. Application Profile

Answer: D

QUESTION 94

The servers are dual-homed to Cisco ACI Leaf1001 and Leaf1002 and must be connected in an active-active mode. The server NICs do not support LACP. These settings have already been configured on the Cisco ACI:

- interface policy group type Leaf Access Port named active-active-noLACP
- three port selectors: port-1, port-2, and port-3
- AEP called active-active-noLACP has three associated EPGs: EPG-A, EPG-B, and EPG-C

Which action must be taken to migrate the server ports to a different leaf switch in the event of a catastrophic failure?

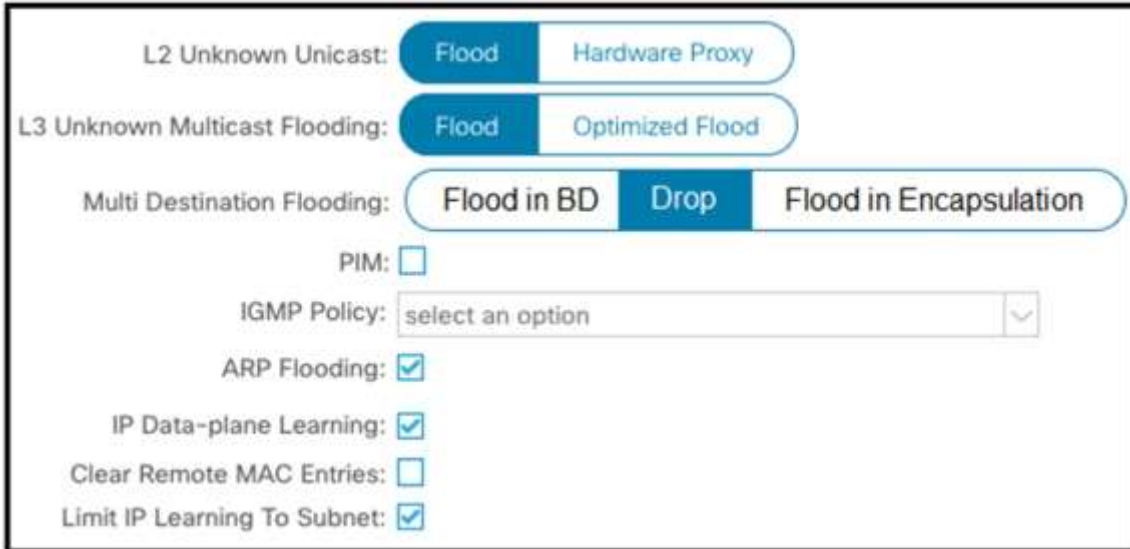
- A. Enable IP Data Plane Learning.
- B. Configure failover VLANs in the VLAN pool.
- C. Enable Port Tracking under System Settings.

D. Configure the AEP on a physical domain.

Answer: C

QUESTION 95

Refer to the exhibit. Which method does Cisco ACI fabric use to forward L2 Unknown Unicast packets?



The screenshot shows the following configuration options:

- L2 Unknown Unicast: **Flood** (selected), Hardware Proxy
- L3 Unknown Multicast Flooding: **Flood** (selected), Optimized Flood
- Multi Destination Flooding: **Flood in BD** (selected), Drop, Flood in Encapsulation
- PIM:
- IGMP Policy: select an option
- ARP Flooding:
- IP Data-plane Learning:
- Clear Remote MAC Entries:
- Limit IP Learning To Subnet:

- A. The source leaf sends the traffic to all ports in BD.
- B. Packets are dropped if dMAC is absent in COOP.
- C. The traffic is flooded using VRF Outer Multicast Group ID.
- D. Traffic is flooded to all Layer 2 ports of ACI fabric.

Answer: B

QUESTION 96

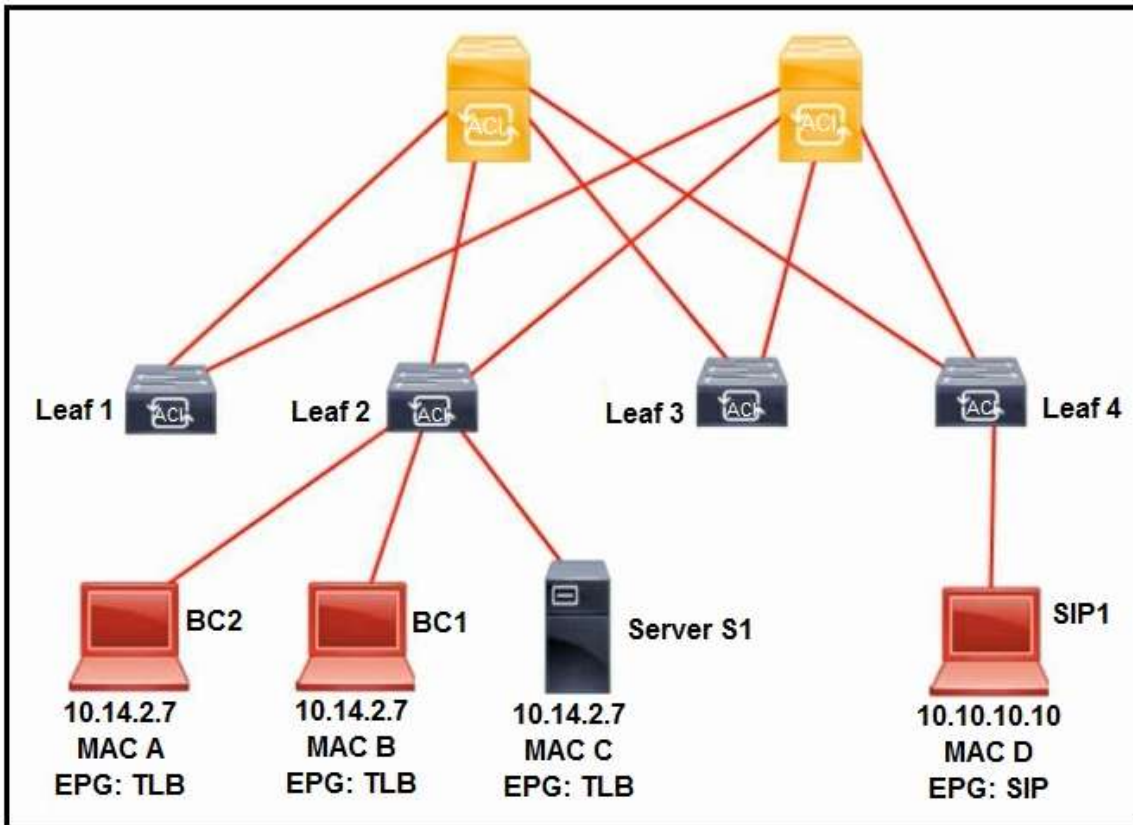
An engineer must implement an L3Out within a tenant to allow the reachability to services outside of the Cisco ACI fabric. The requirement is to allow communication from the EPGs in the same VRF to the external services and save TCAM resource utilization. Which contract insertion method must be used to meet these requirements?

- A. Provider: each service EPGs
Consumer: vzAny inside the VRF
- B. Provider: each service EPGs
Consumer: L3Out external EPGs
- C. Provider: L3Out external EPGs
Consumer: each service EPGs
- D. Provider: L3Out external EPGs
Consumer: vzAny inside VRF

Answer: B

QUESTION 97

Refer to the exhibit. Server S1 is load balancing traffic received from SIP1 to BC1 and BC2. The Cisco ACI fabric must learn the IP address of S1 and unlearn the BC1 and BC2 IP addresses. Which two actions must be taken to meet these requirements? (Choose two.)



- A. Check the Limit IP learning to subnet box.
- B. Disable IP data plane learning on EPG TLB.
- C. Enforce subnet check globally.
- D. Suppress ARP response on BC1 and BC2.
- E. Create L4-L7 virtual IP of 10.14.2.7.

Answer: BC

QUESTION 98

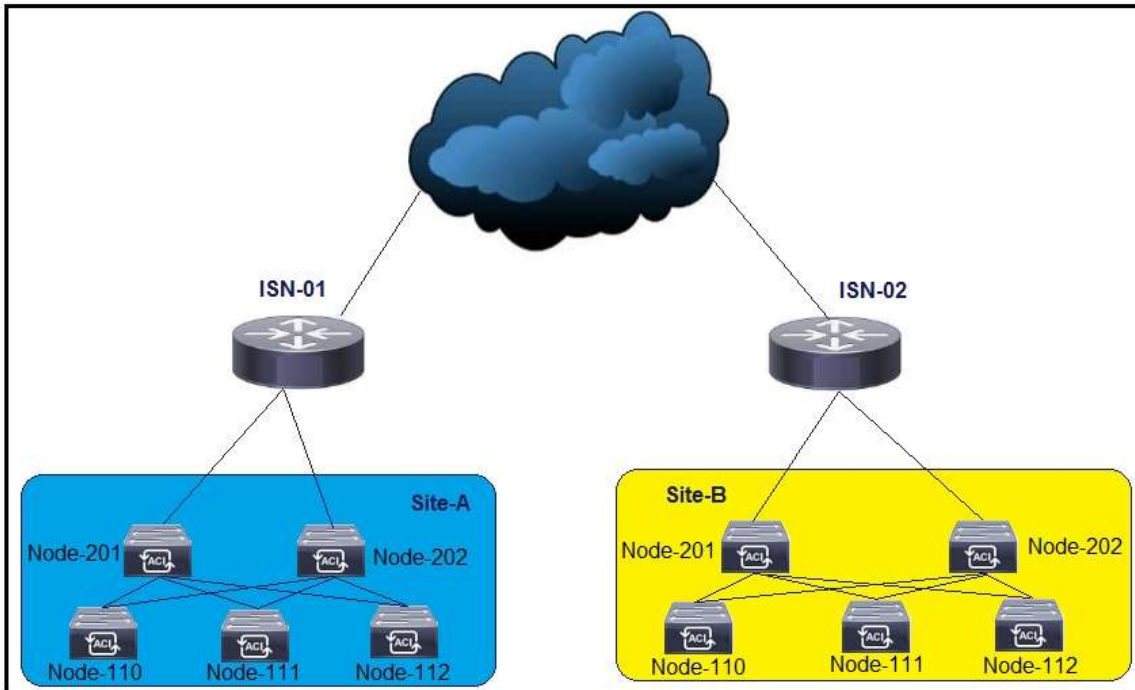
Which PIM version must be configured in the Inter-Pod Network to allow broadcast, unknown unicast, and multicast flooding between Cisco ACI pods?

- A. Bidirectional PIM
- B. PIM dense mode
- C. PIM sparse mode
- D. Source Specific Multicast

Answer: A

QUESTION 99

Refer to the exhibit. In a Cisco ACI Multi-Site deployment, traffic fails to pass between Site-A and Site-B, and an engineer troubleshoots the link between ISN-01 and Node-201. Which set of actions establishes connectivity?

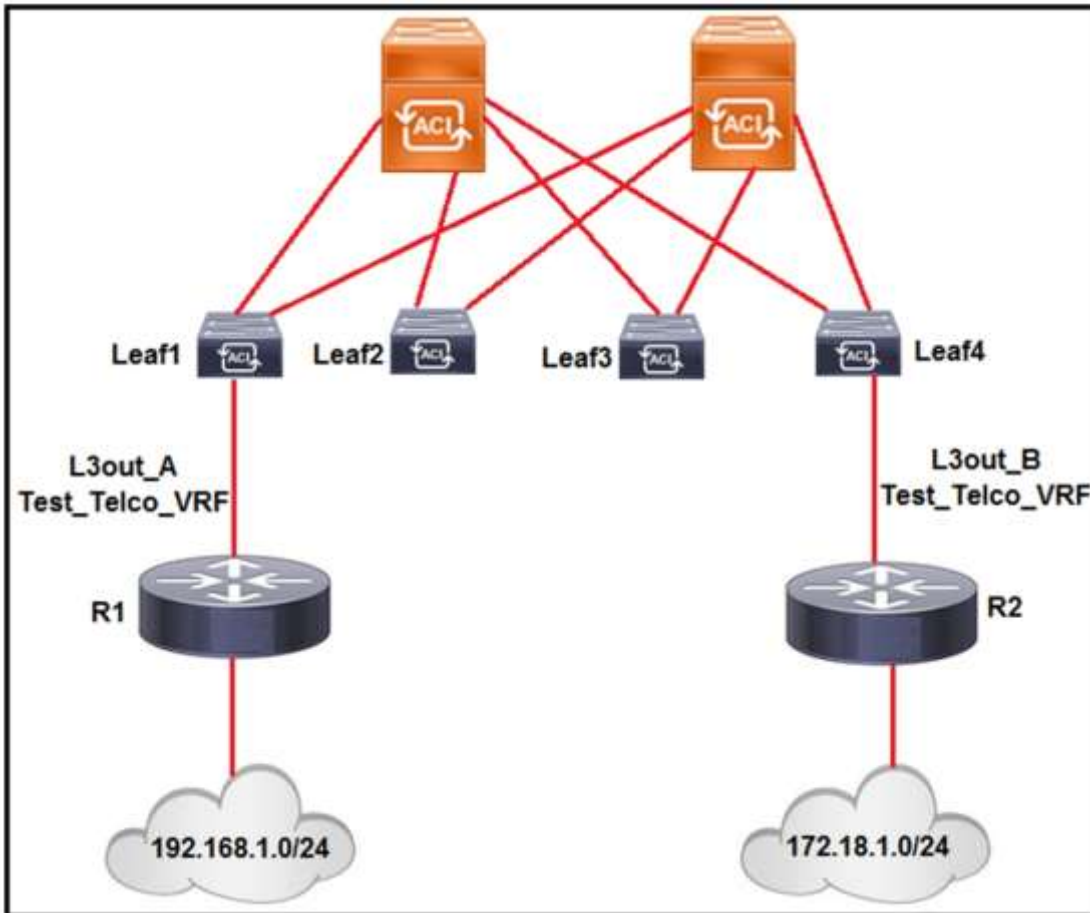


- A. Configure the MTU on the link to be at least 1000 bytes larger than the MTU of the ACI fabrics. Configure the link as a routed subinterface by using VLAN-4.
- B. Configure the MTU on the link to be at least 100 bytes larger than the MTU of the ACI fabrics. Configure the link as an access interface by using VLAN-4.
- C. Configure the MTU on the link to be at least 100 bytes larger than the MTU of the ACI fabrics. Configure the link as a routed subinterface by using VLAN-4.
- D. Configure the MTU on the link to be at least 1000 bytes larger than the MTU of the ACI fabrics. Configure the link as an access interface by using VLAN-4.

Answer: A

QUESTION 100

Refer to the exhibit. Which two sets of actions must be taken to permit subnet 192.168.1.0/24 to communicate with subnet 172.18.1.0/24 using Cisco ACI fabric? (Choose two.)

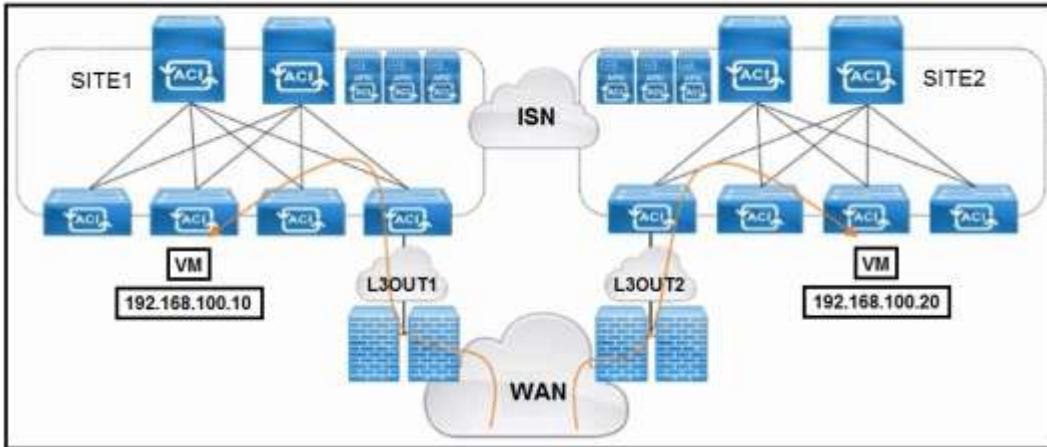


- A. Configure 192.168.1.0/24 with scope Export Route Control subnet under L3out_B.
Configure 192.168.1.0/24 with scope External subnet for external EPG under L3out_A.
- B. Configure 172.18.1.0/24 with scope External subnet for external EPG under L3out_A.
Configure 192.168.1.0/24 with scope External subnet for external EPG under L3out_B.
- C. Configure 172.18.1.0/24 with scope Export Route Control subnet under L3out_A
Configure 172.18.1.0/24 with scope External subnet for external EPG under L3out_B.
- D. Configure 172.18.1.0/24 with scope Export Route Control subnet under L3out_B.
Configure 192.168.1.0/24 with scope External subnet for external EPG under L3out_A.
- E. Configure 192.168.1.0/24 with scope Export Route Control subnet under L3out_A.
Configure 172.18.1.0/24 with scope External subnet for external EPG under L3out_B.

Answer: AB

QUESTION 101

Refer to the exhibit. An engineer must implement a solution to ensure that ingress and egress traffic flows are symmetric for all stretched bridge domains in the customer multisite architecture. Which configuration accomplishes this goal?



- A. Configure host route advertisement on the bridge domains.
- B. Enable anycast services to the firewalls in both fabrics.
- C. Implement a policy-based redirect using a service graph.
- D. Add a new stretched external EPG to the existing L3Outs.

Answer: D