

➤ **Vendor:** Microsoft

➤ **Exam Code:** MB-700

➤ **Exam Name:** Microsoft Dynamics 365: Finance and Operations Apps Solution Architect

➤ **New Updated Questions from Braindump2go (Updated in June/2021)**

**Visit Braindump2go and Download Full Version MB-700 Exam Dumps**

**QUESTION 57**

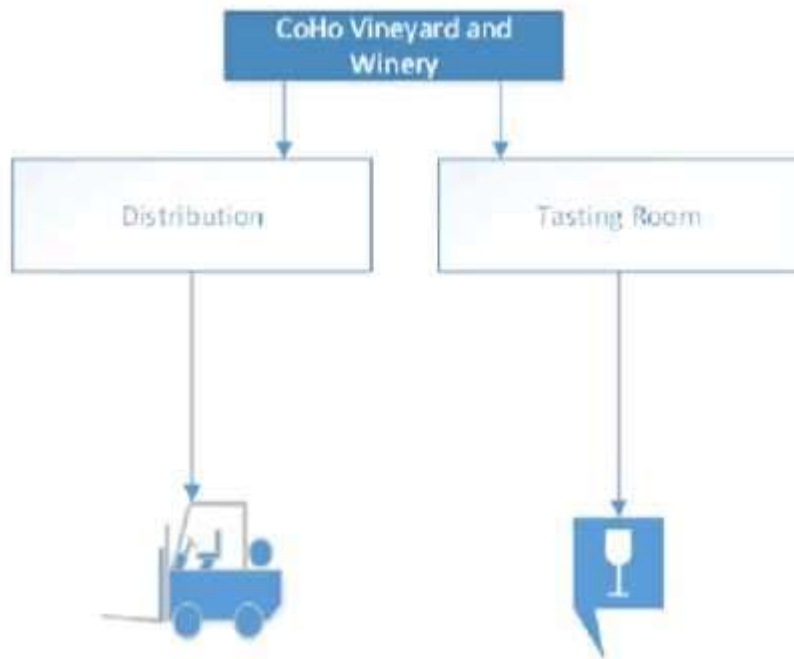
**Case Study 2 - CoHo Vineyard and Winery**

**Overview**

CoHo Vineyard and Winery is based in the United States. The company has a single vineyard. The company distributes full pallets of wine worldwide and sometimes sells wine by using a private label. Grape growing and wine production operations are owned and operated by a third-party company. The company uses bottles, accessories, and other disposables from a company in China. CoHo Vineyard and Winery opens a second location. This location manages inventory for Wine Club members and includes a wine tasting room. The location also includes a warehouse and distribution center. The wine club currently has 200 members. The company hopes to increase this number. The company holds events for club members in the tasting room and ships both full cases and individual bottles to members. The tasting room is not treated as a retail store. All sales to club members only and purchases must be made on-account.

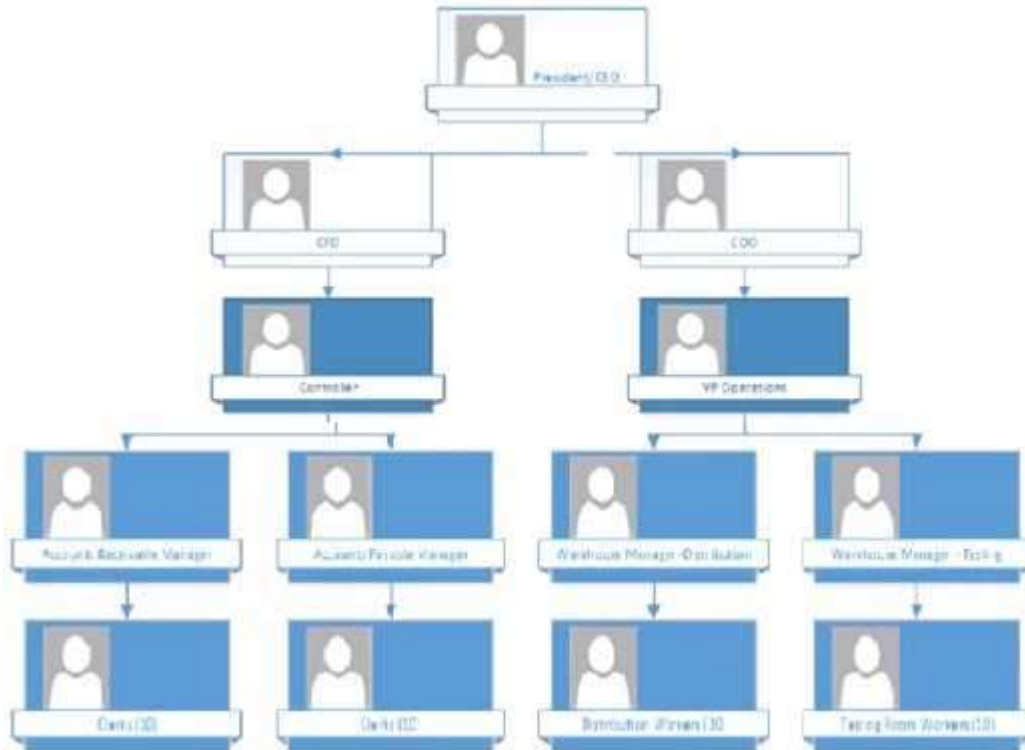
**Company structure**

The following graphic shows the company structure:



**Organization**

The current organizational chart and roles as follows:



**Current environment**

Coho Vineyard and Winery currently uses manual processes for most of its operations. The company stores names and phone numbers for club members and prospective club members in a Microsoft Excel workbook. The sales team currently tracks club membership in a separate system. Sales team stock awards are granted on a three-year basis. The solution for the sales Team cannot be replaced for three years.

- The types of wine, such as cabernet sauvignon and red blends are tracked as separate items. Each item will have a year associated with it such as Red Blend 2017, 2018, 2019, etc. The items are updated for the year association annually.
- Peak times for order entry could be in the hundreds. This typically happens when first and second shift workers overlap and all users are on the system, as well as orders imported in.

**[MB-700 Exam Dumps](#) [MB-700 Exam Questions](#) [MB-700 PDF Dumps](#) [MB-700 VCE Dumps](#)**

**<https://www.braindump2go.com/mb-700.html>**

- Packaging materials, bottles, and accessories are received in the warehouse FOB Destination from the manufacturer in China.
- Each retailer has individual item numbers, barcode placement descriptions and other additions such as pictures and details of the wine year and flavor notes. CoHo Vineyard and Winery has outgrown their legacy ERP system and plans to implement Dynamics 365 Finance. CoHo wants to use out-of-the-box tools which are linked to the system where possible and not create new tools.

**Licensing and organization**

- Only the President/CEO, CFO, COO, Controller and VP Operations users must be able to access finance and warehouse features.
- Warehouse users must only have access to warehouse function. All other users must have access to finance functions.
- The distribution center must have mobile scanners for the warehouse. The tasting room will not have mobile scanners.
- The inventory cost must be tracked separately by distribution center or tasting room.

**Club membership events**

- You must ensure the members created in their existing system are also customers in Dynamics 365 Finance and that the customers do not exist in both systems under multiple record numbers. - When tasting events are planned, text notifications must be sent out to the club members.
- Text notifications must sent out to non-club members to encourage the non-members to join the club.
- During tasting events. CoHo will need access to place orders during the event but will not have the need for cash registers.

**Warehouse and shipping**

- The system must be able to track inventory throughout the whole warehouse process.
- A Certificate of Origin must accompany each shipment.
- Private label items that are shipped to retailers must be stored and costed as a single item number at CoHo.
- The system must be able to compare year-to-year performance of a single wine type.

**Implementation**

- Business processes must be documented as step-by-step processes and must align with the process flows in a visual format
- Data will be migrated and is a requirement for order entry.
- Data migration must be completed prior to testing.
- You must track each step of process validation so that the users have ownership for their individual functional areas. The tracking system used should be integrated with the system where possible.

**Issues**

- Users are struggling to understand the new system's processes.
- CoHo is concerned that the go-live will may not go smoothly.

Hotspot Question  
You need to recommend a performance and load testing strategy for the requirement.

What should you recommend? To answer, select the appropriate options in the answer area. NOTE: Each correct selection is worth one point.

Answer Area

Requirement	Option
Recommend objects for load testing.	<input type="checkbox"/> Customer imports and user count <input type="checkbox"/> Order imports and warehouse picking <input type="checkbox"/> Order imports, user count, and order entry <input type="checkbox"/> Warehouse picking and user count
Recommend a testing sequence.	<input type="checkbox"/> Data migration and then order import <input type="checkbox"/> Order import and then data migration <input type="checkbox"/> Vendor import and then order import

Answer:

Answer Area

Requirement	Option
Recommend objects for load testing.	<input type="checkbox"/> Customer imports and user count <input type="checkbox"/> Order imports and warehouse picking <input checked="" type="checkbox"/> Order imports, user count, and order entry <input type="checkbox"/> Warehouse picking and user count
Recommend a testing sequence.	<input type="checkbox"/> Data migration and then order import <input checked="" type="checkbox"/> Order import and then data migration <input type="checkbox"/> Vendor import and then order import

**QUESTION 58**

**Note: This question is part of a series of questions that present the same scenario. Each question in the series contains a unique solution that might meet the stated goals. Some question sets might have more than one correct solution, while others might not have a correct solution.**

**After you answer a question in this section, you will NOT be able to return to it. As a result, these questions will not appear in the review screen.**

A manufacturing company has multiple factories and distribution centers in remote areas where they have poor internet connectivity. The company is planning to implement Dynamics 365 Supply Chain Management.

The company's main priorities are uninterrupted factory and distribution center operations, master data management, financial global reporting, and integration with analytics tools.

You need to design the infrastructure.

Solution: Implement the manufacturing factories' operations and distribution center operations on- premises and replicate the data to a Microsoft data center.

Does the solution meet the goal?

- A. Yes
- B. No

Answer: A

**QUESTION 59**

**Note: This question is part of a series of questions that present the same scenario. Each question in the series contains a unique solution that might meet the stated goals. Some question sets might have more than one correct solution, while others might not have a correct solution.**

**After you answer a question in this section, you will NOT be able to return to it. As a result, these questions will not appear in the review screen.**

A manufacturing company has multiple factories and distribution centers in remote areas where they have poor internet connectivity. The company is planning to implement Dynamics 365 Supply Chain Management.

The company's main priorities are uninterrupted factory and distribution center operations, master data management, financial global reporting, and integration with analytics tools.

You need to design the infrastructure.

Solution: Implement cross-premises Microsoft Azure virtual network between the distribution centers, factories, and the Microsoft data center.

Does the solution meet The goal?

- A. Yes

B. No

**Answer: A**

**QUESTION 60**

**Note: This question is part of a series of questions that present the same scenario. Each question in the series contains a unique solution that might meet the stated goals. Some question sets might have more than one correct solution, while others might not have a correct solution.**

**After you answer a question in this section, you will NOT be able to return to it. As a result, these questions will not appear in the review screen.**

A manufacturing company has multiple factories and distribution centers in remote areas where they have poor internet connectivity. The company is planning to implement Dynamics 365 Supply Chain Management.

The company's main priorities are uninterrupted factory and distribution center operations, master data management financial global reporting, and integration with analytics tools.

You need to design the infrastructure.

Solution: Implement the manufacturing factories' operations and distribution center operations on- premises and the center data repository in the cloud.

Does the solution meet the goal?

A. Yes

B. No

**Answer: B**

**QUESTION 61**

A company is implementing a new Dynamics 365 cloud deployment. The stakeholders need to confirm that performance testing meets their expectations. The single-user rest procure-to-pay scenario is complete.

You need to successfully complete the multi-user load test.

Which tool should you recommend?

A. Microsoft Azure DevOps

B. Microsoft Dynamics Lifecycle Services

C. PerfSDK

D. Visual Studio

**Answer: C**

**QUESTION 62**

A company currently using Dynamics AX 2009 plans to upgrade to Dynamics 365.

You need to recommend a data migration tool to transfer critical data.

Which two data migration tools should you recommend? Each correct answer presents a complete solution.

NOTE: Each correct selection is worth one point.

A. Microsoft Dynamics AX 2009 Data migration tool (DMT)

B. Data upgrade

C. Data Import/Export Framework (DIXF)

D. Data Management Workspace

**Answer: AC**

**QUESTION 63**

A company uses Dynamics 365 Supply Chain Management and has two legal entities that distribute the same items. One of the legal entities uses advanced warehouse management. New items that are created must meet the business needs of both companies and allow for consolidated analytics.

You need to recommend a master data management strategy to standardize the item master and meet the business requirements.

What should you recommend?

A. Create the product record and release to each company where setup variations are completed.

B. Use Common Data Management to create the item templates for both legal entities.

C. Create an item in each company with different item numbers.

D. Use an advanced warehouse setup for the product and release to both companies.

E. Create an item in each company with the same item number.

**Answer: B**

**QUESTION 64**

You are planning to implement Dynamics 365 Finance.

Accountants in your organization need to be able to enter multiple lines into payment journals.

You need to recommend a tool for expediting data entry.

What should you recommend?

A. Use the desktop version of Microsoft Excel to use the Excel Data Connector app.

B. Use the Data migration tool.

C. Use an aggregate data entity to expose data to the Microsoft Excel Data Connector app.

D. Use Microsoft Excel online to use The Excel Data Connector app.

**Answer: A**

**QUESTION 65**

A company produces automotive components. The company uses Microsoft Excel to track the quantity of parts on hand. The company wants to automate processes to track inventory using Dynamics 365 Supply Chain Management.

You need to ensure that the company can track supplies and determine when to purchase new inventory.

Which two features should you use? Each correct answer presents part of the solution.

NOTE: Each correct selection is worth one point.

A. Demand forecasting

- B. Master planning
- C. Purchase requisitions
- D. Purchase agreements
- E. Purchase policies

**Answer:** AC

**QUESTION 66**

A local art school is considering a new Dynamics 365 Finance cloud implementation. The school needs to select a system authentication type. Which two setup options does the implementation require? Each correct answer presents a complete solution. NOTE: Each correct selection is worth one point.

- A. Use a valid Azure Active Directory (Azure AD) account.
- B. Use a valid Active Directory account
- C. Use OAuth.
- D. Use assigned roles.
- E. Use an enabled Dynamics 365 Finance user.

**Answer:** AC

**QUESTION 67**

A company has a Dynamics B65 Finance environment. The company's architect is working with a developer to perform multi-user testing with the Performance SDK. You need to ensure the environment is prepared to achieve the goal. Which two prerequisites must be met? Each correct answer presents part of the solution. NOTE: Each correct selection is worth one point.

- A. Visual Studio 2019 Enterprise Edition
- B. Visual Studio 2015 Professional Edition
- C. Tier-2 Sandbox
- D. Tier-1 Sandbox

**Answer:** BC

**QUESTION 68**

A company is using Dynamics 365 Finance. You need to ensure that latest service updates from Microsoft are always installed in the production environment. What should you recommend?

- A. Run the upgrade analysis tool.
- B. Run the code upgrade service to analyze the code.
- C. Request updates by using a service request.
- D. Run through the project onboarding checklist
- E. Configure continuous updates.

**Answer:** E

**QUESTION 69**

A travel agency is implementing Dynamics 365 Finance and Dynamics 365 Supply Chain Management. The agency must validate and perform these tasks during each regression cycle.

- Purchase and sales processes
- Payment gateway functionality to third-party integration
- Vendor payment
- Notifications
- Chart control
- Page refresh data consistency

You need to determine which tasks can be performed using the Regression suite automation tool (RSAT). Which three tasks can be performed? Each Correct answer presents a complete solution. NOTE: Each correct selection is worth one point

- A. chart control
- B. notifications
- C. page refresh data consistency
- D. configure vendor payment settings
- E. purchase and sales processes

**Answer:** BCE

**QUESTION 70**

Fourth Coffee plans to implement Dynamics 365 Finance and Dynamics 365 Supply Chain Management. The company owns and operates the following divisions:

Division	Action
Production	Packages and roasts coffee beans
Distribution	Delivers products to market

You need to ensure that Fourth Coffee can report financial results by division. Which strategy should you recommend?

- A. Create two legal entities, create one warehouse and associate the financial dimension to the warehouse.
- B. Create one legal entity with one site that has two warehouses. Associate the financial dimensions to the warehouses.



- C. Create two legal entities, create one site and associate a financial dimension per company.
- D. Create one legal entity with two sites. Associate financial dimensions to sites.

**Answer: D**

**QUESTION 71**

A company plans to implement Dynamics 365 Finance Operations (on-premises).  
The company has system compliance requirements that must be addressed.  
You need to design the solution for the company.  
What should you address in the design?

- A. job-protected family and medical leave
- B. workers' compensation
- C. employee retirement
- D. data privacy

**Answer: D**

**QUESTION 72**

A client wants to create a custom view-only security role that allows users to view the customer list in the accounts receivable module.  
You create a security role named Read Only UserAR and add the role to users.  
You create a custom duty named Customer ViewList.  
You need to recommend how to implement the privileges.  
Which three actions should you perform? Each correct answer presents part of the solution.  
NOTE: Each correct selection is worth one point.

- A. Add the CustCustomerMasterInquire duty to ReadOnlyUserAR.
- B. Add ReadOnlyAR to users.
- C. Add the Customers privilege to CustCustomerMasterInquire.
- D. Add CustomerViewList to ReadOnlyUserAR.
- E. Add the Customers privilege to CustomerViewList.
- F. Add the Customers privilege to the CustCustomer

**Answer: BDE**

**QUESTION 73**

A company uses Dynamics 365 Finance and Supply Chain Management.  
The company would like to add a third-party solution for scheduling appointments.  
You need to recommend a solution to transfer critical schedule information.  
Which two actions should you perform to make a recommendation? Each correct answer presents part of the solution  
NOTE: Each correct selection is worth one point.

- A. Analyze the impact of the new system in each business unit.
- B. Categorize business requirements for functional consultants to identify gaps in functionality.
- C. Describe the new functionality that is missing in the current system.
- D. Identify business processes that must be added, removed, or modified by functional consultants.

**Answer: BD**

**QUESTION 74**

A company is moving financial workloads to Dynamics 365 Finance.  
Balance sheet accounts do not require department dimension postings while profit and loss accounts require department dimensions.  
You need to determine which functionality achieves the goal.  
What should you recommend?

- A. Legal entities
- B. Financial dimensions
- C. Account structures
- D. Financial dimension sets

**Answer: C**

**QUESTION 75**

A German company is implementing a cloud-based Dynamics 365 system.  
The company needs to determine the best data storage solution for the following requirements:  
- Data must be stored in the European Union.  
- Data cannot be viewed by the United States government under the Patriot Act.  
- Data transfer exceptions can be made but must be authorized by the corporate legal team.  
You need to determine which cloud services may have to transfer data to the United States.  
Which three services should you review? Each correct answer presents a complete solution.  
NOTE: Each correct selection is worth one point.

- A. Lifecycle Services
- B. Technical support
- C. Usage data
- D. Power BI dashboard
- E. Data center failover

**Answer: ABC**

**QUESTION 76**

A company that rents photocopiers is implementing Dynamics 365 Supply Chain Management.  
Technicians carry spare parts in their trucks to use during maintenance visits.  
You need to determine how to capture the parts consumed.

**[MB-700 Exam Dumps](#) [MB-700 Exam Questions](#) [MB-700 PDF Dumps](#) [MB-700 VCE Dumps](#)**

**<https://www.braindump2go.com/mb-700.html>**

Where should you capture this information?

- A. Fixed Assets module
- B. Service module
- C. Service agreement
- D. Sales order

**Answer:** A

**Explanation:**

<https://docs.microsoft.com/en-us/dynamics365/supply-chain/asset-management/setup-for-objects/object-types>

**QUESTION 77**

A local bookstore plans to offer online ordering with in-store pickup by using a third-party e-commerce site.

Credit card authorizations are required for online sales.

You need to recommend options to ensure that customers who place online orders are not charged until the merchandise is picked up in the store.

What are three possible ways to achieve this goal? Each correct answer presents part of the solution.

NOTE: Each correct selection is worth one point.

- A. Pass a credit card token from Dynamics 365 Retail POS to e-commerce.
- B. Pass sales data from e-commerce to Dynamics 365 Finance.
- C. Configure Dynamics 365 Finance and Dynamics 365 Retail.
- D. Replace e-commerce with a link to Dynamics 365 Retail POS so users can enter their own credit card data.
- E. Pass a credit card token from e-commerce to Dynamics 365 Retail POS.

**Answer:** BCE